

Figure 22-2
Skeleton of a cat.

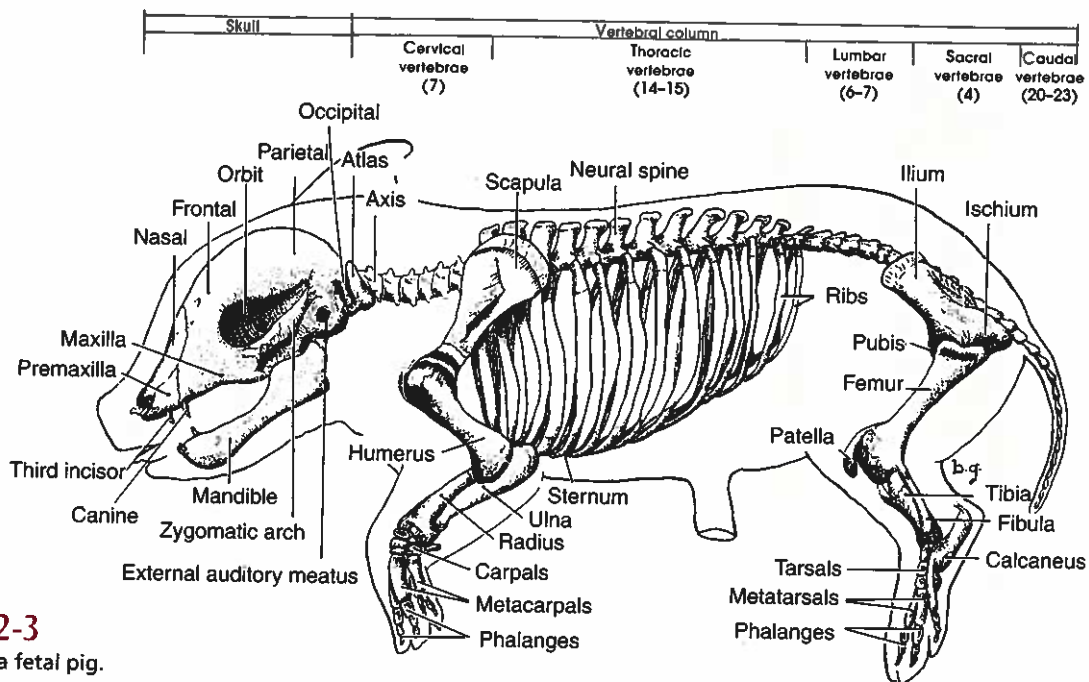


Figure 22-3
Skeleton of a fetal pig.



As you study the mounted skeleton of a dog or cat, compare the parts with those of the fetal pig skeleton (Figure 22-3). Then try to locate these parts and visualize their relationships within the flesh of a preserved pig. As you do, notice the similarities with a human skeleton (Figure 22-4).

As in a frog, a pig skeleton consists of an **axial skeleton** (skull, vertebral column, ribs, and sternum) and an **appendicular skeleton** (pectoral and pelvic girdles and their appendages).